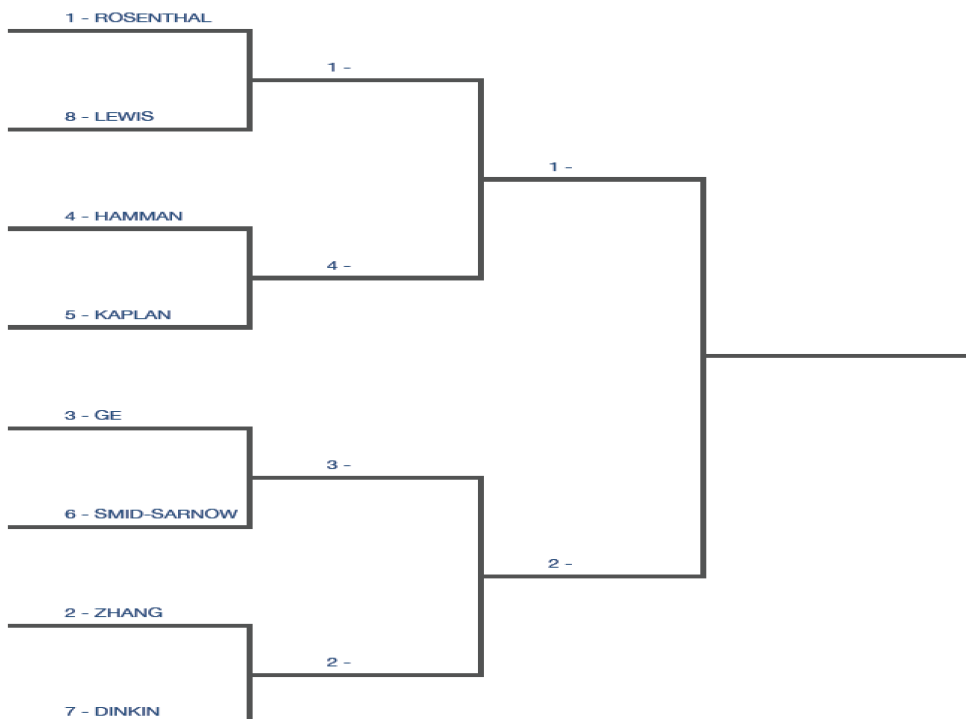


Volume 19, Issue 15  
 April 26, 2026

# “Trials” and Tribulations—MUSBC

## QUARTERFINAL

<b>1</b> Rosenthal					<b>156</b>
30	64	14	48		
13	22	68	8		
<b>8</b> Lewis*					<b>111</b>
<b>4</b> Hamman*					<b>164</b>
37	47	53	30		-3
7	45	31	37		0
<b>5</b> Kaplan					<b>120</b>
<b>3</b> Ge*					<b>161</b>
66	19	31	45		
19	26	16	36		
<b>6</b> Smid_Sarnow					<b>97</b>
<b>2</b> Zhang					<b>153</b>
10	37	59	47		
51	39	19	23		
<b>7</b> Dinkin*					<b>132</b>



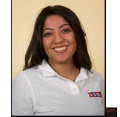
**USBF President**  
 Geoff Hampson  
**USBF Vice President**  
 Christal Henner  
**USBF COO & Secretary**  
 Jan Martel  
**USBF CFO & Treasurer**  
 Max Schireson  
**USBF Recorder**  
 Jack Oest  
 jost@rcn.com  
 773-387-9378  
**USBF Chief**  
**Communications Officer**  
 Suzi Subeck  
**Directors**  
 McKenzie Myers, DIC  
 Ken Horwedel  
 Chris Wiegand  
**Tournament Organizer**  
 Jan Martel  
**Software Expert**  
 Al Hollander  
**VuGraph Organizers**  
 Rob Barrington  
 Jan Martel  
 Chris Wiegand  
**Appeals Administrator**  
 Suzi Subeck, Chairman  
**Appeals Panel:**  
 Wafik Abdou  
 David Berkowitz  
 Cheri Bjerkan  
 Tommy Carmichael  
 Rich DeMartino  
 Marty Fleisher  
 Ron Gerard  
 Geoff Hampson  
 Marty Hirschman  
 George Jacobs  
 Ralph Katz  
 Chip Martel  
 Jeff Meckstroth  
 Kerri Sanborn  
 Danny Sprung  
 Adam Wildavsky  
**Bulletin Editor**  
 Suzi Subeck  
**Hospitality**  
 Marie-France Benoit  
 Marge Morgan

# Mixed Schedule:

Mixed Schedule			
Round Robin (15 or 16 TEAMS - with 15, each team has a sit out)			
Day	Date	Time	Boards
Wednesday	April 22	10:00 - 11:25	Round 1 Boards 1-11
		11:45 - 1:10	Round 2 Boards 12-22
		2:30 - 3:55	80 minute Lunch Break
		4:15 - 5:40	Round 3 Boards 23-33
Thursday	April 23	6:00 - 7:25	Round 4 Boards 34-44
			Round 5, Boards 45-55
		10:00 - 11:25	Round 6 Boards 1-11
		11:45 - 1:10	Round 7 Boards 12-22
Friday	April 24	2:30 - 3:55	80 minute Lunch Break
		4:15 - 5:40	Round 8 Boards 23-33
		6:00 - 7:25	Round 9 Boards 34-44
			Round 10, Boards 45-55
<b>Quarterfinal</b>			
Saturday	April 25	10:00 - 12:00	Segment 1 Boards 1-15
		12:15 - 2:15	Segment 2 Boards 16-30
		3:30 - 5:30	75 minute Break
Sunday	April 26	5:45 - 7:45	Segment 3 Boards 31-45
			Segment 4 Boards 46-60
<b>Semifinal</b>			
Monday	April 27	10:00 - 12:00	Segment 5 Boards 1-15
		12:15 - 2:15	Segment 6 Boards 16-30
		3:30 - 5:30	75 minute Break
Tuesday	April 28	5:45 - 7:45	Segment 3 Boards 31-45
			Segment 4 Boards 46-60
<b>Final</b>			
Wednesday	April 29	10:00 - 12:00	Segment 1 Boards 1-15
		12:15 - 2:15	Segment 2 Boards 16-30
		3:30 - 5:30	75 minute Break
Thursday	April 30	5:45 - 7:45	Segment 3 Boards 31-45
			Segment 4 Boards 46-60
Friday	May 1	10:00 - 12:00	Segment 5 Boards 1-15
		12:15 - 2:15	Segment 6 Boards 16-30
		3:15 - 5:15	60 minute Break
Saturday	May 2	5:30 - 7:30	Segment 7 Boards 31-45
			Segment 8 Boards 46-60

# Mixed Entries:

Bramley	Bart Bramley, Capt Kit Woolsey	Kitty Cooper JoAnna Stansby
Compton	Chris Compton, Capt Gigi Simpson Jeff Meckstroth	Donna Compton Gary Cohler Candyce Pfluger
Ding	Hong Ding, Capt Lin-huan Chen	Ming Sheng Ding-hwa Hsieh
Dinkin	Sam Dinkin, Capt Cenk Tuncok Adam Grossack	Avery Silverstein Lynn Baker Emma Kolesnik
Ge	Xin Ge, Capt Michael Rosenberg Kevin Rosenberg	Disa Eythorsdottir Debbie Rosenberg Amber Lin
Hamman	Kristen Onsgard, Capt Bob Hamman Kerri Sanborn	Mike Passell Jill Meyers Steve Sanborn
Henner	Christal Henner, Capt Steve Garner Adam Wildavsky	Uday Ivatury Shawn Quinn Pam Wittes
Kaplan	Adam Kaplan, Capt Harrison Luba Garth Yettick	Jenni Carmichael Allison Howard
Lewis	Linda Lewis, Capt Raluca Nistor Max Rotaru	Finn Kolesnik Radu Nistor Ljudmila Kamenova
Li	Music Li, Capt Genie Thai-May	Qinqin Zhang Leyi Chen
Millens	Shan Huang, Capt Sandra Rimstedt Kevin Dwyer-Rimstedt	Joan Millens Cecilia Dwyer-Rimstedt
Rosenthal	Andrew Rosenthal, Capt Chris Willenken Eldad Ginossar	Migry Campanile Olivia Schireson Dana Berkowitz
Rubenstein	Stewart Rubenstein, Capt Joe Grue Zach Grossack	Anam Tebha Jenny Wolpert Giorgia Botta
Smid_Sarnow	Ariel Smid-Sarnow, Capt Philip Wang	Julie Arbit Nicole Qian
Zhang	Sylvia Shi, Capt Susan Zhang Janice Molson	Daniel Korbel Eddie Wold Geoff Hampson



Why do men strongly outperform women at “mindsports” such as chess and bridge? Mindsports mainly use the brain and require skills such as memory, critical thinking, problem solving, strategic planning, mental discipline and judgment. Without physical differences in strength, how do we explain why the top level of such games tends to be dominated by men?

A defining characteristic of bridge, which I study, is that it is always played in partnership. Each game consists of four players divided into two pairs who compete against each other to win tricks. Major bridge events have open and women’s categories, often held concurrently, with very few women playing in the open.

## World Bridge News

While this allows women to compete at an international level, it feeds into perceptions about women’s inability to succeed at the highest level.

Women have limited visibility at the top levels of bridge. The chief tournament directors and those on international executive committees are most often men (although this is starting to change). The captains and coaches of the women-only teams are nearly always men. Female sponsors prefer to hire male professional players as partners and teammates.

Male domination at both the top levels of administration and of the game means there can be a lack of recognition of the structural barriers for women.

Research conducted by the academic project Bridge: A MindSport for All (Bamsa) found that gender stereotypes and “neurosexism” (claiming there are differences between female and male brains that can explain women’s inferiority), can partly explain differences in achievement.



### **How The Conversation is different: We explain without oversimplifying.**

That’s because sexist arguments that male brains are superiorly wired for logic and mathematics can be used to offer men more opportunities and training than women.

This is despite the fact that modern research shows there isn’t such a thing as a distinctly male or female brain. Most brains are a mosaic of what we think of as feminine and masculine features. And the more mixed our brains, the better our mental health.

The brain also changes a lot depending on our environment – if we are constantly encouraged or discouraged to do certain things, such as nurturing, this will affect our brain wiring – a process called neuroplasticity.

Research has also shown that when people are reminded of a negative gender stereotype, such as women not being good at math or men not being good at emotions, they actually perform worse on tasks measuring such ability. Men also have higher levels of general confidence than women, which is a reflection of society and can be an advantage in mindsports.

In my research, I interviewed 52 top bridge players (20 women and 32 men) from Europe and the US. We discovered that some bridge players, both men and women, believed that female brains are simply better suited to emotion, nurturing and multi-tasking than to mental toughness and competitiveness.

# Delayed Kibitzing Throughout the USBCs on the LoveBridge site!

There will be delayed kibitzing for both of the 2026 USBCs on the LoveBridge website. Live Vugraph is delayed 30 minutes or until all tables have completed play on a board, whichever is later.

## Live video commentary of Finals

In addition to your opportunity to watch the 2026 USBC play on LoveBridge Vugraph, Rob Barrington, Ewan McNay, and Adam Parrish will be hosting full day video commentary of the 2nd day of both Finals on the USBF YouTube channel at 11:30 AM and 5:00 PM EDT, on the following dates:

- April 21, Open Final, April 30, Mixed Final.

## Highlights after each stage of each event

Teams of experts, including some of the players in the USBCs, will join Rob, Ewan, and Adam for round ups of each stage of play. These BridgeCasts will be posted on the USBF YouTube channel the morning after each segment airs:

- 4/16 - Open Round Robin;
- 4/18 - Open Quarterfinal;
- 4/20 - Open Semifinal;
- 4/25 - Mixed Round Robin;
- 4/27 - Mixed Quarterfinal;
- 4/29 - Mixed Semifinal.



I think it's clever,  
"8 ever, 9 never!"

**Kibitzing Schedule (EDT) For all KO days** of the 2026 USBCs, kibitzing times will be :

Segment 1: 11:30 am EDT

Segment 2: 1:45 pm EDT

Segment 3: 5:00 pm EDT

Segment 4: 7:15 pm EDT

**For Round Robin days**, each kibitzing segment will start 30 minutes after play starts.

**To view a Single Table**, click on the blue arrow on the scores page. It provides the largest view of one table, with buttons to get to other information.

**Match View** will show the two tables of a match side by side on your screen;

**Split View** will give you 4 panes of your window and you can put whatever you want in each of them to watch 2 side-by-side matches at once, or one match and the scores of others.

**Click on Buttons to get interesting information:**

- The image of the sticker with the number of the board (upper right) takes you to the results of the board;
- the arrow in the bottom right corner takes you to the scoresheet
- the DDS shows the double dummy analyses. Besides that there is a button for the other table of the same match,
- at the top left corner you can see the bidding with alerts and the explanations (mouse over), the tricks already played, and the double dummy analysis for the available number of tricks with the par score.
- **NEW THIS YEAR:** Written commentary will show in a large area on the left of the screen in Single Table view and at the top of the screen in Match View. If you are interesting in providing written commentary, please email Jan and she will get you authorized.

## Navigation icons:

While surfing here and there in the vugraph, or amongst the archive sessions, there are icons to help you. You can always go back to the main page with the "house" or to the standings with the "scores". There is also a built-in back button because the back button of your browser will always take you to the starting page. If this is not what you wanted, push next in your browser and you can continue where you were.

# Helpful Information for Players On Site!

**No Electronic Devices are Permitted in the Playing Area.**

**This applies to players AND kibitzers.**

**Severe penalties will be assessed for violation of this rule.**

**Please turn off all cell phones and check them at the door.**

**The USBF reserves the right to wand anyone entering the playing field.**



## MASSAGES

Our wonderful massage therapist, Ela, will come to the hotel whenever there are enough people who want a massage. Hopefully, she will be coming on Sunday, April 12.

Please let Jan Martel (on site) know if you want a massage that Sunday or on any other day and Jan will arrange it.

---

## HOSPITALITY

The hospitality suite (room 2321) will be open most of the day. You may watch Vugraph or get a snack when there. We are providing breakfast and lunch each day of play. **Marie France Benoit** will be our lead hostess, with help from **Jacob** and **Marge Morgan**. If you can volunteer to help with hospitality (mainly picking up last-minute things at Costco and other local stores) please let Jan Martel or Marie France know and they will put you to work!!

**Breakfast:** From 8:00-10:00 am. There will be the usual breakfast food: cereal, bagels, toast, salmon, fruit, juice, coffee and tea. Keurig coffee will be available in the hospitality suite. So long as the suite doesn't become too crowded, you are welcome to eat there.

**Lunch:** On the first three days of the Open and Mixed USBCs we will be serving a buffet lunch in the hotel restaurant. The hotel is unwilling to have people take food out of the restaurant to eat someplace else. Lunch will be served from 12:30-2:30. The second Round Robin match each day is scheduled to end at 1:10 and the third match starts at 2:30.

After the first 3 days of each event, lunch will be available in the hospitality suite from 1:45-3:45. There will be a main dish (sandwiches, chicken, main dish salads, pizza) as well as tuna salad, green salad, cheese, fruit, berries, cookies or other desserts.

There is a water dispenser in the hospitality suite. Please bring a water bottle to use. Soft drinks will be available in refrigerators. As with breakfast, you are welcome to eat in the hospitality suite unless it is too crowded.

**Let us know if you have specific needs:** please make our hosts aware of your needs and they will do their best to accommodate you.

## Playing Rooms & Player's Break Room

We have a water dispenser in the Office/Player's Break Room (1321), as well as soft drinks, Nespresso, some packaged snacks, and some fruit. We ask that you recognize that we are working in that room, and others are playing in the rooms next door and across the hall, so please try to keep voices low.

**NEW:** The hotel has requested we use coupons for the in restaurant lunches we are providing. Please see your team captain to get a coupon on days when meals are being provided in the hotel dining room.

# Puzzle Page ...

## Chess

Find and circle all of the Chess words that are hidden in the grid.

The remaining letters spell a secret message.

Note: QUEEN and QUEENING are separately hidden and do not overlap.

I F C H E S S B O A R D Y R R O U C  
S A E T A M K C E H C E C E I P T N  
A T V O R A P S A K Q B T H E A O T  
C D I A G O N A L U Y S O C U R U G  
R T C C S T A L E M A T E S E E R A  
I O N W A P L E M M P P U I U L N M  
F K T A F P N O D E I R B F L I A B  
I A I O S I T N S B H T L N B F M I  
C M R B N S A U L E S C U O P A E T  
E K I G I R A I R O N H N I E T N P  
M G E D G T T P W E O C D T E T T O  
A S N S D Z Z T N T I E E O D A J H  
G N T A C L N I H E P N R M R C U S  
D Y E H H I E G N K M T K O I K M I  
N N E E E C I G O G A E C R K B P B  
E S I T U N X O A O H R X P K I N G  
S I A W K Q R E N M C G N I N E P O  
G M C A S T L I N G E D E K C O L B

ATTACK  
BISHOP  
BLITZ CHESS  
BLOCKED  
BLUNDER  
CAPTURE  
CASTLING  
CENTER  
CHECKMATE  
CHESSBOARD

CHAMPIONSHIP  
DEEP BLUE  
DIAGONAL  
EN PASSANT  
ENDGAME  
EXCHANGE  
FILE  
FISCHER  
FORK  
GAMBIT

GRANDMASTER  
JUMP  
KASPAROV  
KIBITZING  
KING  
KNIGHT  
LOSE  
MATE IN TWO  
MIDDLEGAME  
OPENING

PAWN  
PIECE  
PROMOTION  
QUEEN  
QUEENING  
ROOK  
SACRIFICE  
STALEMATE  
TOURNAMENT  
WIN



I must confess.

There are kings, too, in chess!

				7			
		9	6		5		
			4		6		1
	8			9			5
		1	5	3		6	2
1		2		8	3		6
3							
4			9		2		

Sudoku 1

What did the horse say after it tripped?

*Help! I've fallen and I can't giddyup!*

U U U

## Kibitzer

This is a Yiddish word that basically means "backseat driver."

## Sibling

(n.) You'd give them a kidney but wouldn't allow them to borrow your charger.

# Hard Sudoku

## Sudoku Solutions on Page 12

Sudoku 2

					9		6	1
2	3						4	
3	8		1	2			6	
				3			9	1
	9	4	8					
		5			7		8	4
			2					7



Please be "scent" sitive! Many players have allergies and have trouble breathing when perfumed aromas are present! Thank you!!



We discovered that many used outdated neuroscientific arguments about the gendered brain as a purely biological organ, fixed in its processes and isolated from the external world. There seemed to be a general acceptance that male players are inevitably “better”.

The damage of such widespread beliefs is down to a general lack of knowledge of contemporary neuroscience. Neurosexist arguments and gendered stereotyping, whether intentional or not, create social barriers. These can have negative consequences on participation and inclusion in bridge and other mindsports.

Players themselves may also inadvertently engage in casual sexism and discriminatory language. In the competitive bridge environment, for example, “playing like a man” provides the most status for women. Such dialogue can become normalized “banter”, leading to less respect or recognition of the expertise of top female bridge players.

The Bamsa research suggests that men’s dominance in elite mindsport can ultimately be explained through historic and structural opportunities that privilege men rather than brain differences. For example, women may be constrained by factors such as childcare and other caring duties, which reduces time to practice, play and concentrate.

Research on chess has similarly shown that the underperformance of female chess players can be largely attributed to gender stereotypes and socialization.



### **The paradox of women-only events**

Given the everyday sexism that exists in the worlds of bridge, chess and beyond, women-only events are important spaces. These can help women develop and compete in a less pressured arena relatively free of discrimination and the male gaze.

The women-only game can be considered a valuable space given wider constraints and expectations of society. However, at the same time, the existence of the women-only game serves to reinforce deeply entrenched ideas about women’s abilities to play top-level tournaments. To get rid of women’s bridge or chess would be to remove a needed women-only space, but to keep it reinforces difference and skill-based inequality.

The paradox of the women’s game is that it both enables and constrains women, it is simultaneously both the problem and the solution. Given the complexity of the issue, there is no simple fix to the conundrum. What is clear is that stereotyping and sexism are unlikely to encourage younger women to dedicate the necessary time and effort to becoming an elite player.

Possible solutions include a gender policy at the world level, raising awareness and unconscious-bias training. The new Bamsa project focuses on developing mindsport education in schools. The future continuity of bridge relies on it being inclusive and welcoming (as well as competitive and challenging). As a result of the Bamsa research, the European Bridge League has recently also developed a gender policy that raises awareness of gender-based obstacles, suggests best practices and outlines what disciplinary action should be taken if the policy is breached. It is anticipated that this can be extended globally via the World Bridge Federation.

I had a terrible speed bump addiction, but I'm slowly getting over them.

Did you hear about the fork factory with inconsistent quality control? It was the best of times, it was the worst of times.

Did you hear about the pacifist insect farmer? He got fired because he wouldn't herd a fly.

Just after finishing a four year stint in the Navy, my friend changed her name from Marie to Mary. I asked her why. "It's like they always say,"I before E, except after sea"

Two old vulture buddies have been flying from New York to Florida every winter together for years. But one year they mutually decide that they're too old to be flapping their wings for those many hundreds of miles, and they're going to take a commercial airplane. So they make their reservations.

They arrive at the airport and walk up to the counter to check in. The agent, seeing that one of them has a suitcase, says 'May I check that for you, sir?'

The vulture replies, 'No thank you. It's carrion.'

My friend has fallen head over heels for a new girl. She's only a humble whisky maker, but he loves her still.

RIP Boiling Water. You will be mist.

Did you hear that the inventor of the Knock Knock joke got a no-bell prize?

Why are noses in the middle of your face? They like to be the scenter of attention.

A woman walks into the ER and sits down in chairs. After a moment of silence, she shouts "Shouldn't!". A minute passes. "Can't! Wouldn't!" Another minute. "Oughtn't! Could've! Won't!". A doctor hears her shouts and dashes over to her. "Somebody call the maternity ward! This woman's having contractions!"

Did you hear about the depressed pachyderm? He felt irrelephant to the people around him.

Did you hear about the new discount human egg harvesting chain that's pushing all its competitors out of business? Yeah, they're really taking ova.

Did you hear that the guy who can tell the future using fish eggs has a date AGAIN tonight? Yeah, turns out he's quite the Roemancer.

Did you hear about the woman who started going to parties and joining new clubs after she made pesto? Yeah, she apparently used extroversion olive oil by mistake.

Did you hear about the passionless baker? Yeah, he doesn't really care about his work, he just kneads the dough.

I've started investing in stocks: beef, chicken, and vegetable. Someday, I hope I'll be a bouillonaire.

Did you hear about the guy who broke open his piggy bank? Yeah, he really beat it centsless.

What do you call an Altoid that loves word play? A punnish mint.

The roles of 'nature' vs. 'nurture' is an ongoing debate in the psychological field. But one's preference for taking an elevator over an escalator is surely a difference in upbringing.

An oxymoron walked into a bar, and the silence was deafening.

# A Little Humor!

	black	cherry red	royal blue	silver	white	Chrysler	Ford	Honda	Pontiac	Saab	Celeste	Jet	Premiere	Raven	Trapper	2000	2001	2002	2003	2004
Cindy																				
Debbie																				
Jeffrey																				
Mark																				
Wanda																				
2000																				
2001																				
2002																				
2003																				
2004																				
Celeste																				
Jet																				
Premiere																				
Raven																				
Trapper																				
Chrysler																				
Ford																				
Honda																				
Pontiac																				
Saab																				

**Answer to Puzzle  
on page 12  
Bottom of Page**

Name	Color	Make	Model	Year

Larry, a salesman at the OK Used Cars company, had a busy morning. He brought five different people out to the lot to show five different cars. To his great surprise and pleasure, each customer bought the car that Larry showed them in the lot. Now he just had to process all that paperwork. Determine the name of each customer, and the color, make, model, and year of the used car that each bought.

1. The 2004 car, which was the newest car purchased, was white. Cindy didn't buy a Jet.
2. Mark didn't buy the silver car, but the car he bought was older than the Raven.
3. The Ford car was not royal blue. The Saab Celeste was not a 2000 car, which was the oldest car purchased. The Pontiac car was not a Trapper.
4. Cindy didn't buy the cherry red Raven, which was not a Chrysler car.
5. The Honda was older than the Trapper but newer than the car that Wanda bought.
6. From the oldest to the newest made, the cars purchased were the Pontiac, the car that Jeffrey bought, the black car, the Premiere, and the car that Debbie bought.

# Meet the Players



**Julie Arbit** serves as a research specialist for the Center for Social Solutions. She works on all phases of community-centered and data-driven projects, including cursory research, data collection and analysis, and final products. Julie also helps with coordination of research and team members both within the CSS research team, and more broadly. Having completed her master's in Environmental Policy in Planning at UM in 2021, Julie's research centers on pursuing equity in systems governing food, water, housing, and more. These interests stem from undergraduate and graduate research experience with rural development, alternative food systems, geospatial modeling, and urban stormwater design. She further expanded into the intersection of data-centric research and community partnerships through an internship with the Great Lakes Observing System, and a fellowship with the Midwest Big Data Hub where she focused on ecosystem services and environmental justice along the Rouge River in Detroit. In her time away from work, Julie is an avid bridge player, volunteers for multiple organizations in differently-abled and access-restricted communities, and is pursuing dreams of small-scale homesteading.

*(Continued from page 9)*

The past, present, and future walked into a bar. It was tense.

A dyslexic walks into a bra.

How many tickles does it need before an octopus laughs? Ten tickles.

Do you know that tadpoles are natural story tellers? It's just sad that when they get older, they lose their tales.

Geology rocks, but geography is where it's at.

One time, I went on a trip to visit a company and consult. I hoped they might send a limo and driver to the airport to get me. They sent a harlequin instead. It was a bit disappointing, but I guess it was still a nice jester.

I just opened a fortune cookie with nothing inside. How unfortunate!

Did you hear about the flat Earth believer who decided to walk west until he fell off? In the end he came around, and the only thing he had to fear was sphere itself.

Did you hear about the Vietnamese Restaurant that hired people to stand in a line that wraps around the building, just to seem more popular? Yeah, it's a real Pho Queue to their customers.

To be frank... I'd have to change my name.

Never trust a statistician. They're always plotting something.

How much do computer scientists like 0 and 1? Quite a bit.

Did you hear that Gucci is experimenting with putting their logo on living cows? It's quite an interesting brand collab.

Did you hear about the lions, antelopes, elephants and wildebeest that escaped from the Atlanta zoo? It wasn't so bad, really, they found them all in Savannah.

Overeaters Anonymous 888-888-8888

Police Car loses wheels to thief. Cops are working tirelessly to nab suspect

Here in Schaumburg, Julie is a member of the Smid-Sarnow Mixed Team with Nicole Qian, Ariel Smid-Sarnow, and Philip Wang.

Note: In her spare time (?), Julie assists Jan Martel with USBF business!

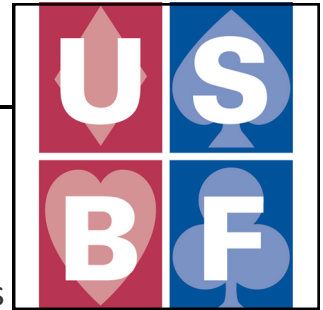
4	6	8	3	9	1	2	5	7
3	5	7	2	6	4	1	8	9
1	9	2	7	5	8	3	4	6
2	3	5	8	7	6	9	1	4
9	7	1	5	4	3	8	6	2
6	8	4	1	2	9	7	3	5
7	2	3	4	8	5	6	9	1
8	4	9	6	1	2	5	7	3
5	1	6	9	3	7	4	2	8

8	6	3	2	4	5	1	9	7
1	2	5	6	9	7	3	8	4
7	9	4	8	1	3	5	2	6
6	4	7	5	3	8	9	1	2
5	1	2	9	7	6	8	4	3
3	8	9	1	2	4	6	7	5
2	3	6	7	8	1	4	5	9
9	5	1	4	6	2	7	3	8
4	7	8	3	5	9	2	6	1

# Sudoku Answers Puzzles on Page 7

Answer to Sudoku 1

Answer to Sudoku 2



## USBF Supporting Membership

If you don't want to play in the USBF Championships that choose teams to represent the USA in the World Bridge Federation Championships, but do want to aid our events, a **Supporting Membership** can be the perfect way for you to be involved.

A Supporting Membership is \$25 for one year (\$75 for 3 years) and your donation will be used to cover inevitable expenses: attorney fees, accounting fees, website support services, tournament directors, insurance, WBF dues, and vugraph operators.

The USBF is an **all-volunteer** organization.

Our meetings are by conference call and at NABCS. Board members and the organization's officers are not compensated for meetings, travel, or hotel expenses.

*(continued from page 11)*

If your guy doesn't appreciate fresh fruit puns, let that mango.

In high school Robert E. Lee was voted most likely to secede.

A perfectionist walked into a bar. Apparently it wasn't set high enough.

If you cannot master the guitar, Don't fret.



## Answer to Logic Puzzle On Page 10

Name	Color	Make	Model	Year
Wanda	black	Saab	Celeste	2002
Mark	royal blue	Pontiac	Jet	2000
Jeffrey	cherry red	Ford	Raven	2001
Debbie	white	Chrysler	Trapper	2004
Cindy	silver	Honda	Premiere	2003



The bridge world lost an icon on Friday.

**Jacek Pszczoła** (born January 10, 1967, died April 25, 2026) was an American professional bridge player of Polish origin. Representing Poland, Pszczoła won the 1998 World Open Pairs Championship with Michał Kwiecień. American bridge players often refer to him by the nickname "Pepsi". He was Player of the Year of the ACBL in 2019.

FaceBook is full of accolades and tributes to a great gentleman and kind, enthusiastic player. His passing is felt with great sadness in the bridge world.

Glen Eisenstein said it best, "a truly great player and one of nice guys."

For the first time in EBL history



**1<sup>st</sup> European Online Transnational  
Mixed Teams Championship**

 14 - 17 May, 2026  
Online on RealBridge

- ♠ Everybody can play - Team up across the world!
- ♠ Win EBL Medals, Master Points and entry fees to the European Transnational Championships!

**REGISTER BY 7 MAY 2026**  
Need a partner or team mates?  
Check the Partnership Desk!

[championships.eurobridge.org/2026-european-online-transnational-mixed-teams-championship](https://championships.eurobridge.org/2026-european-online-transnational-mixed-teams-championship)

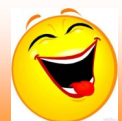
For more information, go to:

<https://championships.eurobridge.org/2026-european-online-transnational-mixed-teams-championship>

**Consider your participation here in the Mixed USBC  
as practice for the European Online Transnationals...  
and your participation there will be practice  
for next year's hunt USA2!**



**Someone glued my deck of cards together...  
I don't know how to deal with it!!**



**BOARD:** 3  
**DEALER:** SOUTH  
**VULNERABLE:** E-W

♠ AT62  
 ♥ J76  
 ♦ JT  
 ♣ 9654

♠ 854  
 ♥ A54  
 ♦ K643  
 ♣ A83

♠ K973  
 ♥ Q3  
 ♦ AQ987  
 ♣ T2

The first day of head-ups is underway.

On Board 3, Disa and Ge bid an aggressive 3NT.

It can be defeated on a rare dummy endplay.

Arbit led the C6 to Ariel's jack. Ariel continued clubs. Disa won the third round of clubs with the CA.

She cashed out the diamonds. On the cash of the last diamond, dummy was endplayed. Sadly for Sarnow, Arbit did not see it in time.

Par: -120

	♣	♦	♥	♠	N
NS	7	4	7	5	5
E	5	9	5	8	8
W	:	:	:	7	:

♠ QJ  
 ♥ KT982  
 ♦ 52  
 ♣ KQJ7

Home team	Visiting team	Room	By	=	IMP			
					NS	EW	Home	Visiting
Rosenthal	Lewis*	Open	2♥	S	♠4 =	110		
		Closed	2♥	S	♥4 +2	170		2
Zhang	Dinkin*	Open	2N	W	♥6 -1	100		4
		Closed	3♥	S	♥4 -1	50		
Ge*	Smid_Sarnow	Open	3♦	E	♣K =	110		10
		Closed	3N	W	♣6 =	600		
Hamman*	Kaplan	Open	2♥	S	♠4 +1	140		1
		Closed	2♥	S	♥4 =	110		

The end position:

po-

Arbit could part with a heart or a club safely... She blanked and threw the ST. Disa left dummy with a small spade to the Q, 5, A!! Arbit cashed her club and was forced to lead a heart giving Disa the last three tricks and her contract.

10 IMPs to Ge

**BOARD:** 6  
**DEALER:** EAST  
**VULNERABLE:** E-W

♠ T6  
 ♥ Q  
 ♦ A8652  
 ♣ JT952

♠ AJ953  
 ♥ K532  
 ♦ K943  
 ♣

♠ 84  
 ♥ AT864  
 ♦ T  
 ♣ AK874

Arbit and Smid fought back on Board 6!!

Par: -620

	♣	♦	♥	♠	N
NS	6	7	2	4	5
EW	7	6	10	8	8

♠ KQ72  
 ♥ J97  
 ♦ QJ7  
 ♣ Q63

Home team		Visiting team		Room	By	=	★	IMP	
NS	EW	Home	Visiting					NS	EW
Rosenthal	Lewis*	Open	4♥	E	♥7	=		620	
		Closed	4♥	E	♦J	+1		650	1
Zhang	Dinkin*	Open	4♥	E	♠K	=		620	-
		Closed	4♥	E	♦Q	=		620	-
Ge*	Smid_Sarnow	Open	4♥	E	♦Q	=		620	
		Closed	6♥	E	♠K	-2	200		620
Hamman*	Kaplan	Open	4♥	E	♥7	=		620	-
		Closed	4♥	E	♠K	=		620	-

Ge opened 1H on his 5/5 in the rounded suits. Sarnow made an aggressive T/O double. Disa made a limit raise plus and Arbit jumped to 5D, putting maximum pressure on her opponents!!

5DX could have failed four tricks for -800, however, Ge chose not to defend and bid 5H.

Disa, having the + in LR+, bid the heart slam. There are unavoidable losers in hearts, diamonds and spades. Contract failing 2 tricks! 13 IMPs to Sarnow

W	N	E	S
		1♥	DBL
2NT	5♦	5♥	PASS
6♥	PASS	PASS	PASS

2NT=LR+

♠ T6 ♥ Q ♦ A8652 ♣ JT952	N Julie Arbit
♠ AJ953 ♥ K532 ♦ K943 ♣	W Disa Eythorsdottir
♠ 84 ♥ AT864 ♦ T ♣ AK874	E Xin Ge
♠ KQ72 ♥ J97 ♦ QJ7 ♣ Q63	S Ariel Smid Sarnow

**BOARD:** 7  
**DEALER:** SOUTH  
**VULNERABLE:** ALL

♠ AQJ9843  
 ♥ AJ4  
 ♦  
 ♣ AKJ

♠ 75  
 ♥ T  
 ♦ AKQ7532  
 ♣ 765

♠ K2  
 ♥ 985  
 ♦ JT864  
 ♣ T93

Par: 1400

	♣	♦	♥	♠	N
NS	11	5	12	12	6
EW	1	8	1	1	2

♠ T6  
 ♥ KQ7632  
 ♦ 9  
 ♣ Q842

Though it was not written up on Friday night, there were 2 more 17 IMP swings on the final board of the RoundRobin.

And here we are on Board 7 of the Knockout and these swings are back!

Four pairs bid the grand:

Lewis/Kolesnik  
 Zhang/Wold  
 Rosenbergs  
 Arbit/Smid

Had the SK been with West, they'd have won big!

The auctions were varied. Some used science and some not so much.

Home team	Visiting team	Room	By	=	IMP
					NS EW Home Visiting
Rosenthal	Lewis*	Open	6♥ S	♠7 =	1430
		Closed	7♥ S	♦A -1	100
Zhang	Dinkin*	Open	7♥ S	♣5 -1	100
		Closed	6♥ S	♣5 =	1430
Ge*	Smid_Sarnow	Open	7♥ S	♦A -1	100
		Closed	7♥ S	♦A -1	100
Hamman*	Kaplan	Open	6♥ S	♦K =	1430
		Closed	6♥ S	♦A =	1430

The Rosenbergs used a relay system combined with Exclusion Keycard to get there.

Wold/Zhang had a simple two round auction: 2H by Zhang (South)-3D by A Grossack (West)- 7H by Wold (North)

Arbit/Sarnow used Exclusion.

Lewis/Kolesnik used lots of bidding room with no alerts:

Willenken Lewis Schireson Kolesnik

W	N	E	S
			2♥
3♦	4♦	PASS	4♥
PASS	5♦	PASS	6♥
PASS	7♥	PASS	PASS

There was no swing in Ge/Sarnow.  
 17 IMPs to Rosenthal  
 17 IMPs to Dinkin

Home team	Visiting team	Room	By	=	IMP				
					NS	EW	Home	Visiting	
Rosenthal	Lewis*	Open	2♥	N	♦7	-1	50	-	-
		Closed	2♥	N	♦7	-1	50	-	-
Zhang	Dinkin*	Open	3N	E	♥T	+1	630		11
		Closed	2♥	N	♦7	-1	50		
Ge*	Smid_Sarnow	Open	2♥	N	♥3	=	110		7
		Closed	3♣	N	♦7	-4	200		
Hamman*	Kaplan	Open	2♥	N	♦7	=	110		7
		Closed	2♥	N	♦7	-4	200		

The screenshot shows a bridge game interface. On the left, a bidding log shows:

W	N	E	S
	1♥	PASS	PASS
2♦	PASS	3NT	PASS
PASS	PASS		

Table: OP 2, Round: 1  
 N-S: Zhang 4 IMP  
 E-W: Dinkin\* 26 IMP

Card holdings for the table:

- North (Eddie Wold): ♠ KQ, ♥ KJ642, ♦ 6, ♣ KJ532
- West (Adam Grossack): ♠ A3, ♥ 87, ♦ AQT43, ♣ 9874
- East (Emma Kolesni): ♠ J75, ♥ AQ53, ♦ J975, ♣ A6
- South (Susan Zhang): ♠ T98642, ♥ T9, ♦ K82, ♣ QT

Other interface elements include a 'DDS' button at the bottom, a 'LoveBridge' logo, and a score display for 'EAST 3NT'.

On Board 9, only one pair in the field bid the makeable NT game.

Yes, it required a lucky lie of the cards, but many matches are won that way!

Newly weds, Adam and Emma Grossack were the stars. And Emma shined brightest as she used excellent instinct and good judgment jumping to 3NT over Adam's balancing 2D. The heart opening on Emma's right made it very likely the HK was onside... and her big diamond fit with partner rated to provide a strong source of tricks.

Emma had one spade, two hearts, five diamonds and one club off the top. She scored one trick in the wash, making four!

11 IMPs to Dinkin when at the other table in this match, Tuncok/Baker were allowed to play in 2H N/S down one!

BOARD: 14  
 DEALER: EAST  
 VULNERABLE: NONE

♠ 95  
 ♥ 98  
 ♦ 952  
 ♣ QT7432

♠ AKT82  
 ♥ T4  
 ♦ Q87  
 ♣ AK9

♠ Q743  
 ♥ KJ532  
 ♦ JT4  
 ♣ J

Par: -140

	♣	♦	♥	♠	N
NS	8	5	5	4	5
EW	5	7	8	9	8

♠ J6  
 ♥ AQ76  
 ♦ AK63  
 ♣ 865

On Board 14, there are four losers in spades E/W... two hearts and two diamonds. One pair played in 3NT while six played in the spade game and one played in a spade partial.

Onsgard and Passell used good judgment in Kaplan/Hamman to stop in the partscore. They were rewarded with 5 IMPs when their counterparts in the other room played in the spade game down one.

Home team	Visiting team	Room	By	=	NS	EW	Home	Visiting
Rosenthal	Lewis*	Open	3N	W ♥9	-1	50	-	-
		Closed	4♠	W ♥9	-1	50	-	-
Zhang	Dinkin*	Open	4♠	W ♥9	-1	50	-	-
		Closed	4♠	W ♥9	-1	50	-	-
Ge*	Smid_Sarnow	Open	4♠	W ♥9	-1	50		
		Closed	4♠	W ♥9	=	420	10	
Hamman*	Kaplan	Open	4♠	E ♦A	-1	50		5
		Closed	3♠	W ♥9	=	140		

In Ge/Sarnow, one small slip let the game succeed.

Arbit led the H9. Sarnow won his queen. Sarnow cashed the DK. Arbit signaled with the D9, UDCA.

Sarnow cashed the HA and with hearts established, he needed to take the setting trick. Alas, he returned the H6 without cashing the high diamond! Disa, taking no chances, ruffed with the SA & claimed.

Maybe Sarnow was trying to maintain an entry to score an uppercut in trump? 10 IMPs to Ge

The screenshot shows a bridge game interface. On the left, a bidding table is visible:

W	N	E	S
		PASS	1NT
DBL	RDBL	PASS	2♣
2♣	3♣	4♣	PASS
PASS	PASS		

Below the table, text indicates: 1NT=14-16, Redouble=single suit, 2C=forced.

The main interface shows four hands:

- North (Julie Arbit): ♠ 95, ♥ 98, ♦ 952, ♣ QT7432
- West (Disa Eythorsdottir): ♠ AKT82, ♥ T4, ♦ Q87, ♣ AK9
- East (Xin Ge): ♠ Q743, ♥ KJ532, ♦ JT4, ♣ J
- South (Ariel Smid Sarnow): ♠ J6, ♥ AQ76, ♦ AK63, ♣ 865

A green envelope icon is shown between the West and East hands, indicating a communication or a specific play.

**BOARD:** 20  
**DEALER:** WEST  
**VULNERABLE:** ALL

♠ K9  
♥ AT9  
♦ Q7653  
♣ 974

♠ 432  
♥ KQJ74  
♦ K92  
♣ Q6

♠ QJ  
♥ 8652  
♦ AJ  
♣ JT852

♠ AT8765  
♥ 3  
♦ T84  
♣ AK3

**Par: 600**

	♣	♦	♥	♠	N
NS	6	10	6	9	9
EW	7	3	7	4	4

On Board 20, Adam Kaplan was the only declarer to take 10 tricks in 4S. He was playing it from South.

Passell led the HK and Kaplan won dummy's ace.

Kaplan made an interesting play off dummy. He played the D3. Onsgard went up with her ace. If she leads the DJ to Passell's king, he will give her a ruff and declarer will be unable to pull trump and enjoy dummy's diamonds without yielding a ruff to West.

The third trump in Passell's hand becomes a real pain!

Home team		Visiting team		Room	By	=	★	IMP	
								NS	EW Home Visiting
Rosenthal	Lewis*	Open	4♠ S	♠4	-1	100			
		Closed	3♠ S	♥K	=	140		6	
Zhang	Dinkin*	Open	2♠ S	♥K	+1	140			2
		Closed	3♥ W	♦3	-2	200			
Ge*	Smid_Sarnow	Open	3♥ W	♠K	-2	200		-	-
		Closed	2♠ S	♥K	+3	200			
Hamman*	Kaplan	Open	4♠ S	♥Q	-1	100			13
		Closed	4♠ S	♥K	+1	650			

Onsgard didn't envision this position. When she won the DA, instead of playing her DJ to partner, getting a diamond ruff while stripping the last diamond from Kaplan's hand, effectively messing up the transportation between North and South, she switched to the CJ. Kaplan won his CA, pulled trump and played the DT. Passell won the DK but he was helpless. He played the CQ and Kaplan claimed 11 tricks.

13 IMPs to Kaplan

DDS

W	N	E	S
1♥	PASS	3♥	3♠
PASS	4♠	PASS	PASS
PASS			

Table: CL 4, Round: 2  
N-S: Kaplan 24 IMP  
E-W: Hamman\* 42 IMP

3H=Mixed Raise

DDS

♠ K9  
♥ AT9  
♦ Q7653  
♣ 974  
N Jenni Carmichael

♠ 432  
♥ KQJ74  
♦ K92  
♣ Q6  
W Mike Passell

♠ QJ  
♥ 8652  
♦ AJ  
♣ JT852  
E Kristen Onsgard

♠ AT8765  
♥ 3  
♦ T84  
♣ AK3  
S Adam Kaplan

OTH S 4♣  
SOUTH 4♠

# Cross IMP's

1.	Bob Hamman - Jill Meyers	Hamman*	2.05	61.36	30
2.	Andrew Rosenthal - Migry Campanile	Rosenthal	1.41	41.00	29
3.	Disa Eythorsdottir - Xin Ge	Ge*	1.38	62.26	45
4.	Geoff Hampson - Janice Molson	Zhang	1.01	45.29	45
5.	Adam Grossack - Emma Kolesnik	Dinkin*	0.62	36.93	60
6.	Adam Kaplan - Jenni Carmichael	Kaplan	0.57	34.36	60
7.	Kerri Sanborn - Steve Sanborn	Hamman*	0.53	16.00	30
8.	Daniel Korbel - Sylvia Shi	Zhang	0.30	13.64	45
9.	Radu Nistor - Raluca Nistor	Lewis*	0.22	6.57	30
10.	Debbie Rosenberg - Michael Rosenberg	Ge*	0.09	4.05	45
11.	Chris Willenken - Olivia Schireson	Rosenthal	0.07	3.36	45
12.	Dana Berkowitz - Eldad Ginossar	Rosenthal	-0.03	-1.29	45
13.	Cenk Tunçok - Lynn Baker	Dinkin*	-0.04	-1.07	30
14.	Amber Lin - Kevin Rosenberg	Ge*	-0.15	-4.57	30
15.	Nicole Qian - Philip Wang	Smid_Sarnow	-0.31	-18.76	60
16.	Kristen Onsgard - Mike Passell	Hamman*	-0.36	-21.64	60
17.	Ljudmila Kamenova - Max Rotaru	Lewis*	-0.55	-24.14	44
18.	Finn Kolesnik - Linda Lewis	Lewis*	-0.57	-25.50	45
19.	Ariel Smid Sarnow - Julie Arbit	Smid_Sarnow	-0.72	-42.98	60
20.	Allison Howard - Harrison Luba	Kaplan	-1.07	-32.00	30
21.	Eddie Wold - Susan Zhang	Zhang	-1.20	-35.93	30
22.	Allison Howard - Garth Yettick	Kaplan	-1.94	-58.07	30
23.	Avery Silverstein - Sam Dinkin	Dinkin*	-1.96	-58.86	30